

ACCESS PASS: JSX, 5-Star Helicopter, NetJets Crew, Staff and Passengers



Alternate Access Information and ACCESS PASS

Sunday, February 25, 2024

Road Closures associated with the race will impede normal access to the west side of McCarran. Metro Police and race Course Marshals will control traffic entering the area west of the intersection of Duke Ellington and Reno Ave between **3:30pm – 8:30pm.**

USE THESE DIRECTIONS TO AVOID ROAD CLOSURES

- Approach using westbound Tropicana Ave.
- Turn left onto Koval Ln
- Follow road as it turns into Reno Ave.
- STAFF AND CREW - SHOW PASS TO COURSE MARSHAL OR OFFICER STATIONED AT DUKE ELLINGTON AND RENO AVE FOR QUICKER ACCESS.**
- Continue on Reno Ave.
- Turn left on Giles St (Course Marshal available to assist)
- Turn left on Mandalay Bay Rd (Course Marshal at Giles and Mandalay Bay Rd available to assist)
- Continue east on Mandalay Bay Rd turn Right onto Haven St. continue south to JSX, NetJet and 5 Star Helicopter Tours

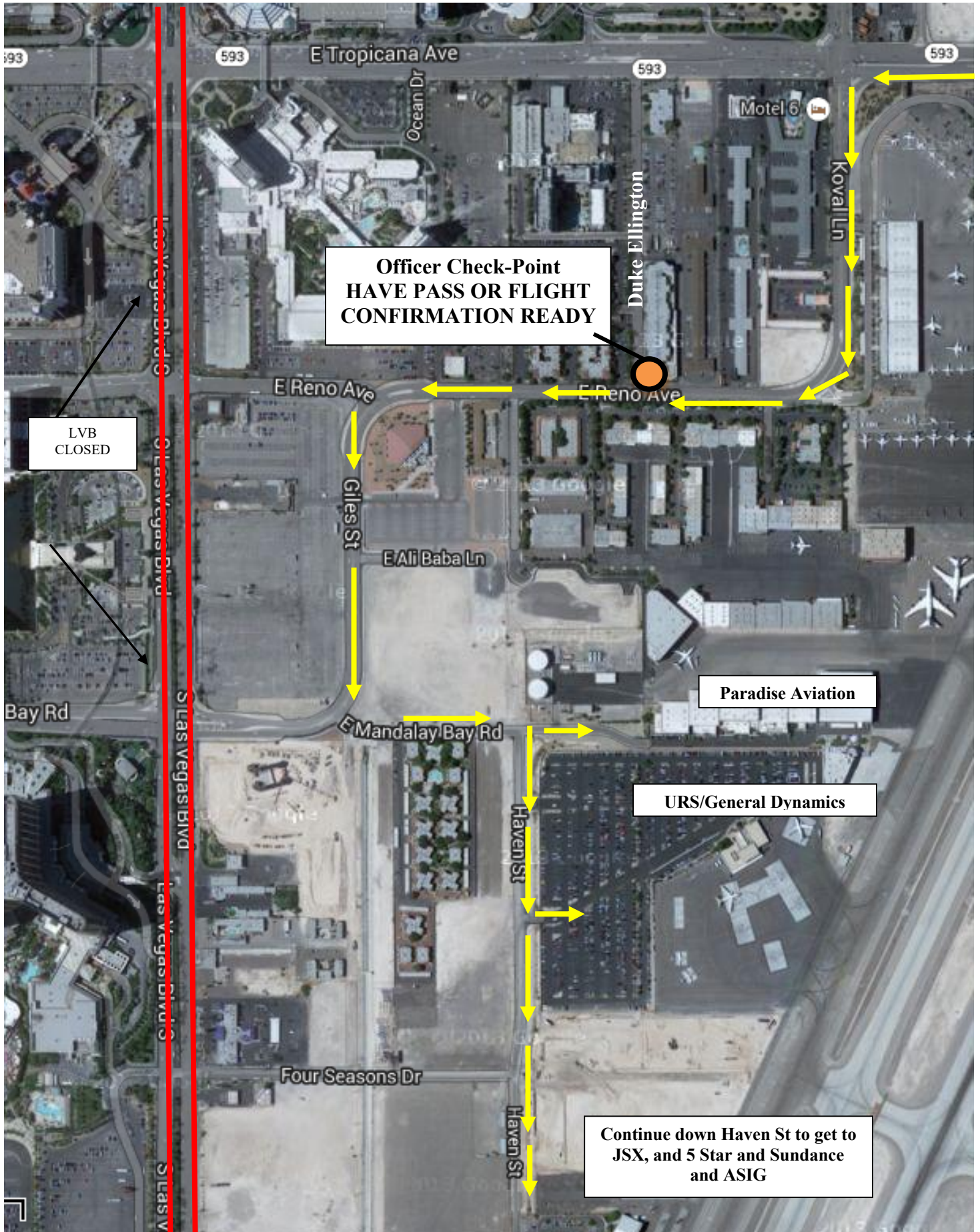
See Map on Reverse. To exit the area, follow directions in reverse.

(Note: JSX and 5 Star Passengers - Ride Share/Limos/Personal Vehicles picking up or dropping travelers will be granted access. Course Marshals are aware and are positioned along the way to assist)

PLAN AHEAD AND ALLOW EXTRA TIME FOR DELAYS

Thank you for your cooperation. More information is available online at

RunRocknRoll.com/Community-Impact



**Officer Check-Point
HAVE PASS OR FLIGHT
CONFIRMATION READY**

**LVB
CLOSED**

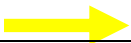
Paradise Aviation

URS/General Dynamics

**Continue down Haven St to get to
JSX, and 5 Star and Sundance
and ASIG**



Roads Closed



Vehicle Access