

ACCESS PASS: Paradise Aviation, Sands Aviation, Amentum, ASIG, Janet Airlines Crew, Staff and Passengers



Alternate Access Information and ACCESS PASS

Sunday, February 25, 2024

Road Closures associated with the race will impede normal access to the west side of McCarran. Metro Police and race Course Marshals will control traffic entering the area west of the interesection of Duke Ellington and Reno Ave between 3:30pm – 8:30pm.

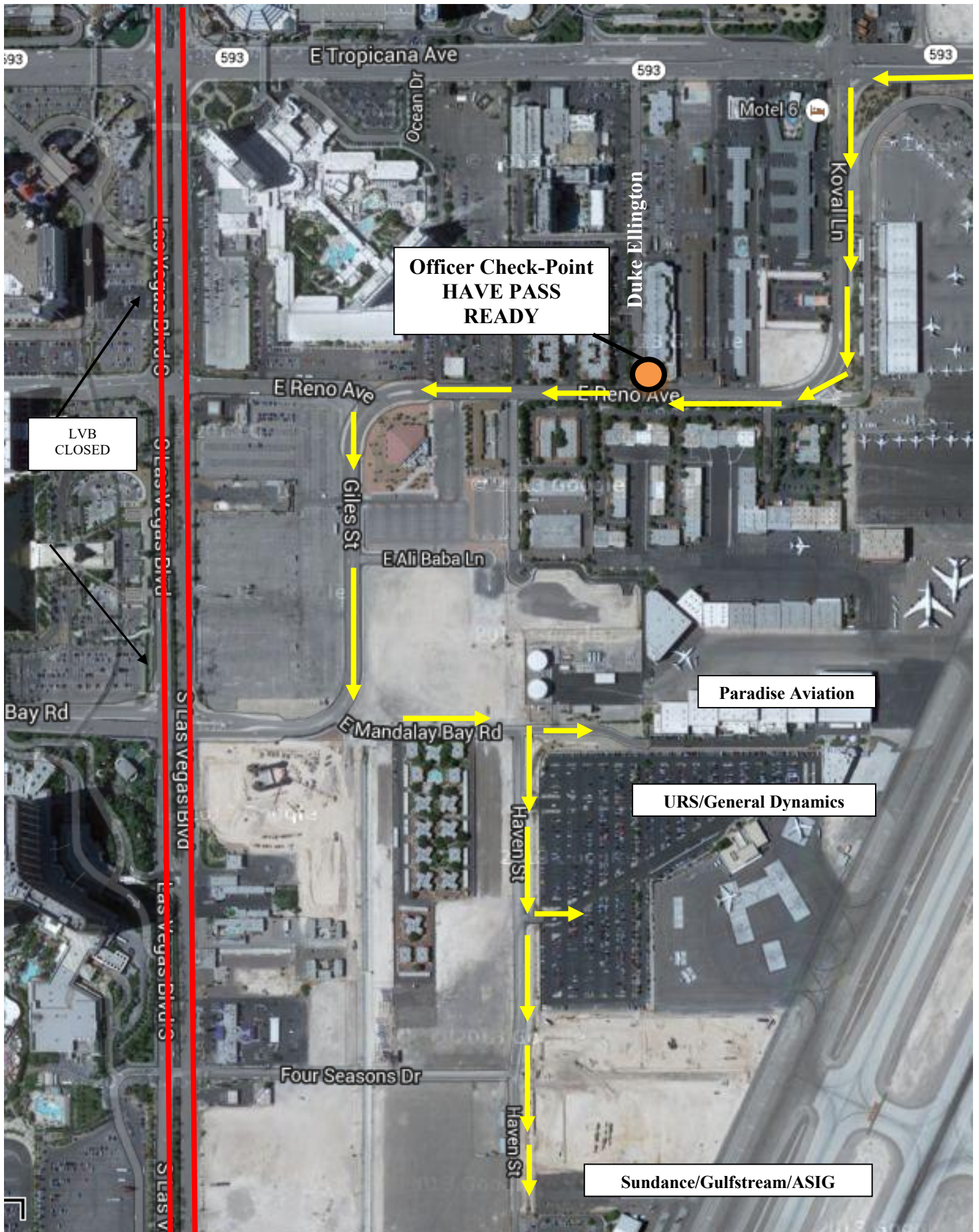
USE THESE DIRECTIONS TO AVOID ROAD CLOSURES

- Approach using westbound Tropicana Ave.
- Turn left onto Koval Ln
- Follow road as it turns into Reno Ave.
- SHOW PASS TO COURSE MARSHAL STATIONED AT DUKE ELLINGTON AND RENO AVE**
- Continue on Reno Ave.
- Turn left on Giles St
- Turn left on Mandalay Bay Rd
- Continue east on Mandalay Bay Rd to enter Paradise Aviation center or turn south onto Haven St.

See Map on Reverse. To exit the area, follow directions in reverse.

Thank you for your cooperation. More information is available online.

RunRocknRoll.com/Community-Impact



**Officer Check-Point
HAVE PASS
READY**

**LVB
CLOSED**

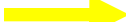
Paradise Aviation

URS/General Dynamics

Sundance/Gulfstream/ASIG



Roads Closed



Vehicle Access