

# ACCESS PASS: Signature Flight, ASIG & Maverick Employees and Patrons



## ACCESS PASS

# Sunday, February 25, 2024

Race road closures will impact access into Signature Flight, ASIG & Maverick Helicopters between 3:30pm – 8:30pm on race day

**Employees, Flight Crews, Passengers and Staff may use this pass. USE DIRECTIONS BELOW TO APPROACH FACILITY TO AVOID ROAD CLOSURES:**

**Until 3:30pm: Access to Signature Flight, ASIG & Maverick Helicopters**

- Approach from the east using WESTBOUND Sunset Blvd
- Show access pass to stationed Metro Officer at Sunset Blvd and Las Vegas Blvd.
- Turn right onto Las Vegas Blvd
- Continue north to main entrance of Signature Flight

**There will be absolutely NO VEHICLE ACCESS between 3:30pm – 8:30pm**

**From 3:30-8:30pm: Access to Signature Flight, ASIG & Maverick Helicopters**

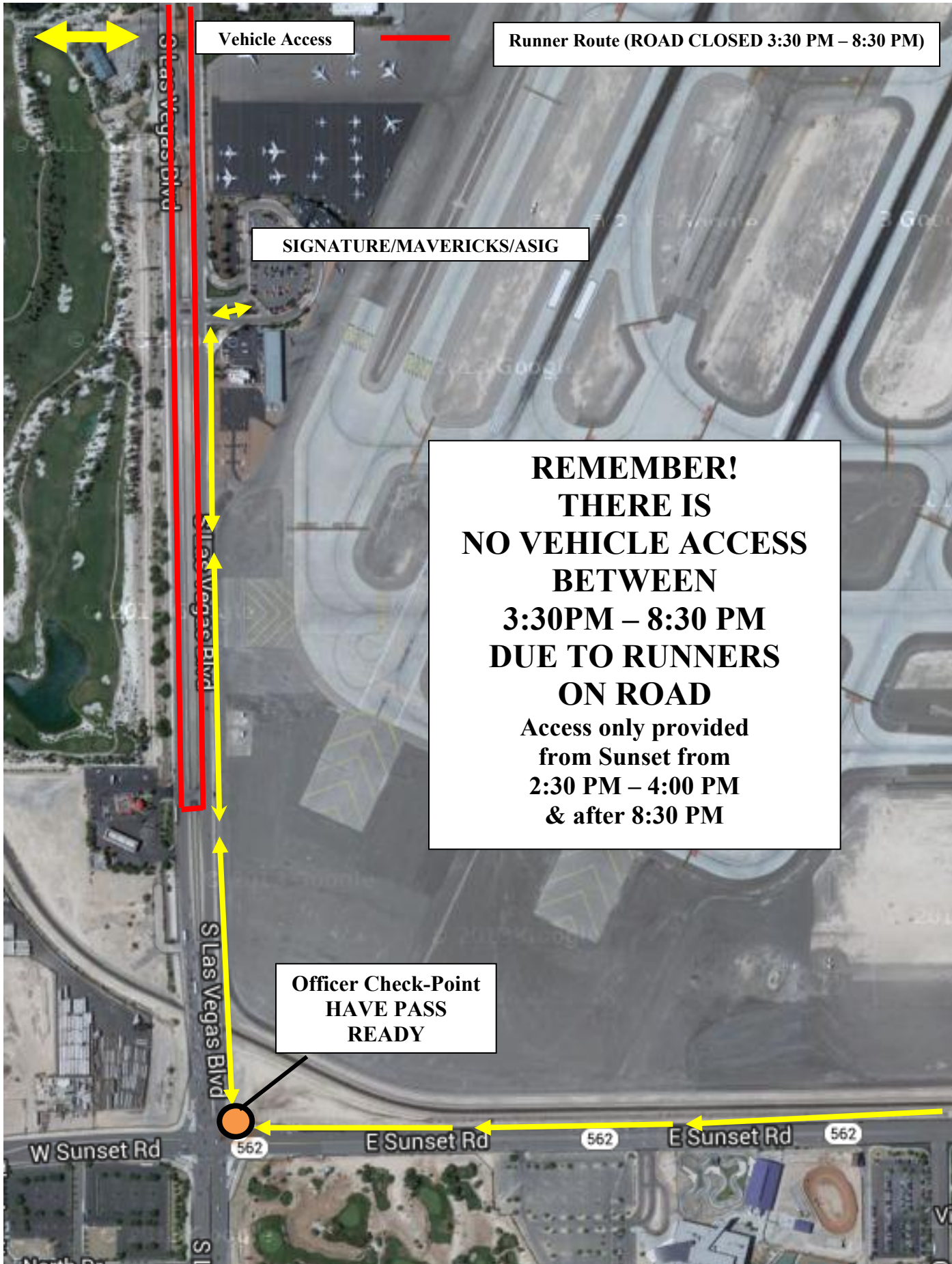
- Approach using westbound Tropicana Ave.
- Turn left onto Koval Ln
- Follow road as it turns into Reno Ave.
- SHOW PASS METRO/COURSE MARSHAL STATIONED AT DUKE ELLINGTON AND RENO AVE**
- Metro and Quail Air Security will direct through Quail Air Center for access.

***See Map on Reverse for Sunset to LVB access until 3:30PM.***

***To exit the area, follow directions in reverse.***

**Thank you for your patience. For more information, please visit our website:**

**[RunRocknRoll.com/Community-Impact](http://RunRocknRoll.com/Community-Impact)**



Vehicle Access

Runner Route (ROAD CLOSED 3:30 PM – 8:30 PM)

SIGNATURE/MAVERICKS/ASIG

**REMEMBER!**  
**THERE IS**  
**NO VEHICLE ACCESS**  
**BETWEEN**  
**3:30PM – 8:30 PM**  
**DUE TO RUNNERS**  
**ON ROAD**  
Access only provided  
from Sunset from  
2:30 PM – 4:00 PM  
& after 8:30 PM

Officer Check-Point  
HAVE PASS  
READY

Roads Closed

Vehicle Access